

City of Brea

Fire Service Delivery Options Assessment



prepared by
Terry Matz

April 21, 2010

Background

- Began as part of the budget development process
- BSP subcommittee formed to evaluate the option of contracting fire services
- Subcommittee conclusion: potential for cost savings by contracting for fire services, but formal proposals required to validate savings
- City Council authorized RFP from OCFA and LA County Fire to compare to Brea Options

Fire Department Options

- Maintain the Brea Fire Department in its current configuration
- Contract with the Orange County Fire Authority
- Contract with the Consolidated Fire Protection District of Los Angeles County
- Restructure the Brea Fire Department
- Restructure the Brea Fire Department and share Command staffing with the City of Fullerton

Defining Brea Fire Total Costs

- Brea Fire Department Budget
- Services provided by other Brea Departments
- Fire Vehicle Lease Costs (not included in Fire Budget)
- Fixed Asset Costs (not included in Fire Budget)
- Credit for Revenue Generated in the Fire and Development Services Departments

Brea Fire Net Costs and Future Cost Assumptions

- Fire Department Budget
 - 2010-11 = 2% over 2009-10 estimate
 - 2011-12 = 4% over prior year
 - 2012-15 = 5% over prior year
- City Costs
 - 2010-11 = 1% over 2009-10 estimate
 - 2011-12 = 2% over prior year
 - 2012-15 = 4% over prior year

Brea Fire Department 5-Year Cost Projections

	2010-11	2011-12	2012-13	2013-14	2014-15
Fire Budget	11,095,270	11,539,081	12,116,035	12,721,837	13,357,928
City Costs	257,917	263,075	273,598	284,542	295,924
Fire Pumper Lease	-	74,974	74,974	74,974	74,974
Fixed Asset Costs	-	-	73,960	73,960	73,960
Fire Revenue	(228,371)	(228,371)	(228,371)	(228,371)	(228,371)
Dev Svs Revenue	(43,087)	(43,087)	(43,087)	(43,087)	(43,087)
Net Costs	11,081,729	11,605,672	12,267,109	12,883,855	13,531,328

Summary of Brea Fire Station Staffing

Station 1	Station 2	Station 3	Station 4	Total Positions
Paramedic Engine (4)*	BLS Truck (3) BLS Engine (3) Battalion Chief (1)	Paramedic Engine (4)*	Type 3 Engine with 1 FT Engineer** ** Cannot respond alone to calls	14 Full-Time 2 Part-Time Apprentice FF 4 Paramedics

* Brea Paramedic staffing = two full-time Paramedics, one full-time Firefighter, and one part-time Apprentice Firefighter

OCFA Net Costs and Future Cost Assumptions

- OCFA Cost Proposal
- City Retained Costs (Emergency Preparedness)
- Fire Revenue Loss
- Development Services Revenue Loss

- Assumes 4.5% increase in OCFA costs over prior year for 2010-15 (Contract Cap)

OCFA Start-Up/Staff Transition Costs

- Start-Up Costs = \$290,000 - \$392,000
 - Paid up-front
- Staff Transition Costs
 - Suggested 120 hours leave bank for transitioning employees
 - Estimated cost of \$178 ,000
 - Charged to Brea as employees use leave

OCFA - Option 1

OCFA Option #1	2010-11	2011-12	2012-13	2013-14	2014-15
OCFA #1 Net Costs	9,649,408	10,069,461	10,508,358	10,966,945	11,446,107
Brea Fire Costs	11,081,729	11,605,672	12,267,109	12,883,855	13,531,328
Annual Savings	1,432,321	1,536,211	1,758,751	1,916,910	2,085,221

Station 1	Station 2	Station 3	Station 4	Total Positions
PAU Truck (4)	Paramedic Engine (4)	Paramedic Engine (4)	Closed	12 Full-Time 5 Paramedics

OCFA - Option 2

OCFA Option #2	2010-11	2011-12	2012-13	2013-14	2014-15
OCFA #2 Net Costs	9,630,660	10,049,870	10,487,885	10,945,550	11,423,749
Brea Fire Costs	11,081,729	11,605,672	12,267,109	12,883,855	13,531,328
Annual Savings	1,451,069	1,555,802	1,779,224	1,938,305	2,107,579

Station 1	Station 2	Station 3	Station 4	Total Positions
PAU Truck (4)	BLS Engine (3) Paramedic Van (2)	PAU Engine (3)	Closed	12 Full-Time 4 Paramedics

OCFA - Option 3

OCFA Option #3	2010-11	2011-12	2012-13	2013-14	2014-15
OCFA #3 Net Costs	10,708,752	11,176,476	11,665,188	12,175,831	12,709,393
Brea Fire Costs	11,081,729	11,605,672	12,267,109	12,883,855	13,531,328
Annual Savings	372,977	429,196	601,921	708,024	821,935

Station 1	Station 2	Station 3	Station 4	Total Positions
PAU Truck (4)	Paramedic Engine (4)	PAU Engine (3)	Paramedic Squad (2)	13 Full-Time 6 Paramedics

OCFA - Option 4

OCFA Option #4	2010-11	2011-12	2012-13	2013-14	2014-15
OCFA #4 Net Costs	11,391,011	11,889,436	12,410,232	12,954,402	13,522,999
Brea Fire Costs	11,081,729	11,605,672	12,267,109	12,883,855	13,531,328
Annual Savings	-309,282	-283,764	-143,123	-70,547	8,329

Station 1	Station 2	Station 3	Station 4	Total Positions
PAU Truck (4)	BLS Engine (3) Paramedic Van (2)	PAU Engine (3)	Paramedic Squad (2)	14 Full-Time 6 Paramedics

OCFA Staff Impact

- All Sworn Personnel Absorbed
 - Positions of rank limited to those needed for Brea contract
 - All others become Firefighters
 - No “Y” Rating unless City wants to pay for benefit
- One (1) Non-Sworn Staff Member Absorbed
- Probable Lay-off of other Non-Sworn Staff
- Apprentice Firefighter Program Eliminated

LA County Fire Net Costs and Future Cost Assumptions

- LA County Cost Proposal
- City Retained Costs (Emergency Preparedness)
- Fire Revenue Loss
- Development Services Revenue Loss

- Assumes 5.5% increase in LA County costs over prior year for 2010-15 (Contract Cap)

LA County Conversion/Staff Transition Costs

- Start-up Costs = \$1.3 Million
 - Paid up-front (based upon amendment letter)
- Staff Transition Costs
 - Existing leave banks of up to 20 vacation days and 12 sick leave days transferred to District
 - Estimated cost of \$771,000
 - Paid up-front

LA County

LA County	2010-11	2011-12	2012-13	2013-14	2014-15
LA County Net Costs	11,288,642	11,891,330	12,527,068	13,197,671	13,905,053
Brea Fire Costs	11,081,729	11,605,672	12,267,109	12,883,855	13,531,328
Annual Savings	-206,913	-285,658	-259,959	-313,816	-373,725

Station 1	Station 2	Station 3	Station 4	Total Positions
PAU Engine (3)	PAU Quint (4) Paramedic Squad (2)	PAU Engine (4) Patrol	Closed	13 Full-Time 5 Paramedics

LA County Staff Impact

- All Sworn Personnel Absorbed
 - Positions of rank limited to those needed for Brea contract
 - All others become Firefighters
 - All Staff “Y” Rated (no loss of pay)
- Probable Lay-off of all Non-Sworn Personnel
- Apprentice Firefighter Program Eliminated

Brea Options Start-Up/ Transition Costs

- No significant start-up costs since all facilities, equipment, and communications remain intact
- Existing sworn and non-sworn staff keep leave banks

Brea – Option A

Brea Option A	2010-11	2011-12	2012-13	2013-14	2014-15
Brea Option A Net Costs	10,534,791	11,058,734	11,720,171	12,336,917	12,984,390
Brea Fire Costs	11,081,729	11,605,672	12,267,109	12,883,855	13,531,328
Annual Savings	546,938	546,938	546,938	546,938	546,938

Station 1	Station 2	Station 3	Station 4	Total Positions
Paramedic Engine (4)	BLS Engine/Truck (4) Battalion Chief (1)	Paramedic Engine (4)	Private Ambulance (2)	13 Full-Time 2 Private EMTs 4 Paramedics

Brea Option A Summary

- Changes Fire Marshal Position to Civilian
- Eliminates Fire Captain/Training Officer
- Reduces Fire Captains from 12 to 9
- Reduces Fire Engineers from 15 to 9
- Increases Firefighters from 12 to 18; and adds 3 Relief Firefighters

Brea Option A Summary

- Eliminates Apprentice Firefighter Program
- Adds \$22,000 for Fullerton Fire Department Structure Fire Response Agreement (22 calls @ \$1,000 per call)
- Continues City Payment of Fire Station #4 Rental (\$3,000 per month) for Ambulance Company

Brea – Option B

Brea Option B	2010-11	2011-12	2012-13	2013-14	2014-15
Brea Option B Net Costs	10,406,319	10,556,876	11,218,313	11,835,059	12,482,532
Brea Fire Costs	11,081,729	11,605,672	12,267,109	12,883,855	13,531,328
Annual Savings	675,410	1,048,796	1,048,796	1,048,796	1,048,796

Station 1	Station 2	Station 3	Station 4	Total Positions
Paramedic Engine (4)	BLS Engine/Truck (4) Battalion Chief (1)	Paramedic Engine (4)	Private Ambulance (2)	13 Full-Time 2 Private EMTs 4 Paramedics

Brea Option B Summary

- Shared Positions
 - Division Chief/Operations
 - Division Chief/Fire Marshal
 - Training Officer
 - Battalion Chiefs (3)
 - Administrative Battalion Chief
 - Fire Chief

Brea Option B Summary

- Reduces Fire Captains from 12 to 9
- Reduces Fire Engineers from 15 to 9
- Increases Firefighters from 12 to 18; and adds 3 Relief Firefighters
- Eliminates Apprentice Firefighter Program
- Continues City Payment of Fire Station #4 Rental (\$3,000 per month) for Ambulance Company

Brea Staff Impacts

- All Sworn Personnel Absorbed
 - Positions of rank limited to those needed for Brea options
 - All others become Firefighters; and adds three Relief Firefighters
 - No “Y” Rating unless Council wants to pay for benefit (estimated cost of benefit = \$164,000)
- All Non-Sworn Staff Retain Positions
- Apprentice Firefighter Program Eliminated

Fire Agency Description

Brea and Fullerton Fire Departments

- Departments within Municipal Corporation
- Council-Manager form of Government
- Brea and Fullerton City Councils are governing bodies and exercise direct budget and policy control
- Fire Chiefs report to their City Managers

Fire Agency Description

OCFA

- Joint Powers Authority with 23 member agencies
- JPA Board of Directors exercise direct budget and policy control
- Each member agency has a seat on JPA Board
- Fire Chief reports to JPA Board

Fire Agency Description

LA County

- Special District under California Law
- LA County Board of Supervisors exercise direct budget and policy control
- Fire Chief is appointed by Board

Summary of Governance Control

Total Control	Shared Control	Some Control	No Control
City of Brea	Brea/Fullerton	OCFA	LA County

Annual Cost Savings Summary

Option	2010-11	2011-12	2012-13	2013-14	2014-15
OCFA Option #1	1,432,321	1,536,211	1,758,751	1,916,910	2,085,221
OCFA Option #2	1,451,069	1,555,802	1,779,224	1,938,305	2,107,579
OCFA Option #3	372,977	429,196	601,921	708,024	821,935
OCFA Option #4	-309,282	-283,764	-143,123	-70,547	8,329

Option	2010-11	2011-12	2012-13	2013-14	2014-15
LA County	-206,913	-285,658	-259,959	-313,816	-373,725

Option	2010-11	2011-12	2012-13	2013-14	2014-15
Brea Option A	546,938	546,938	546,938	546,938	546,938
Brea Option B	675,410	1,048,796	1,048,796	1,048,796	1,048,796

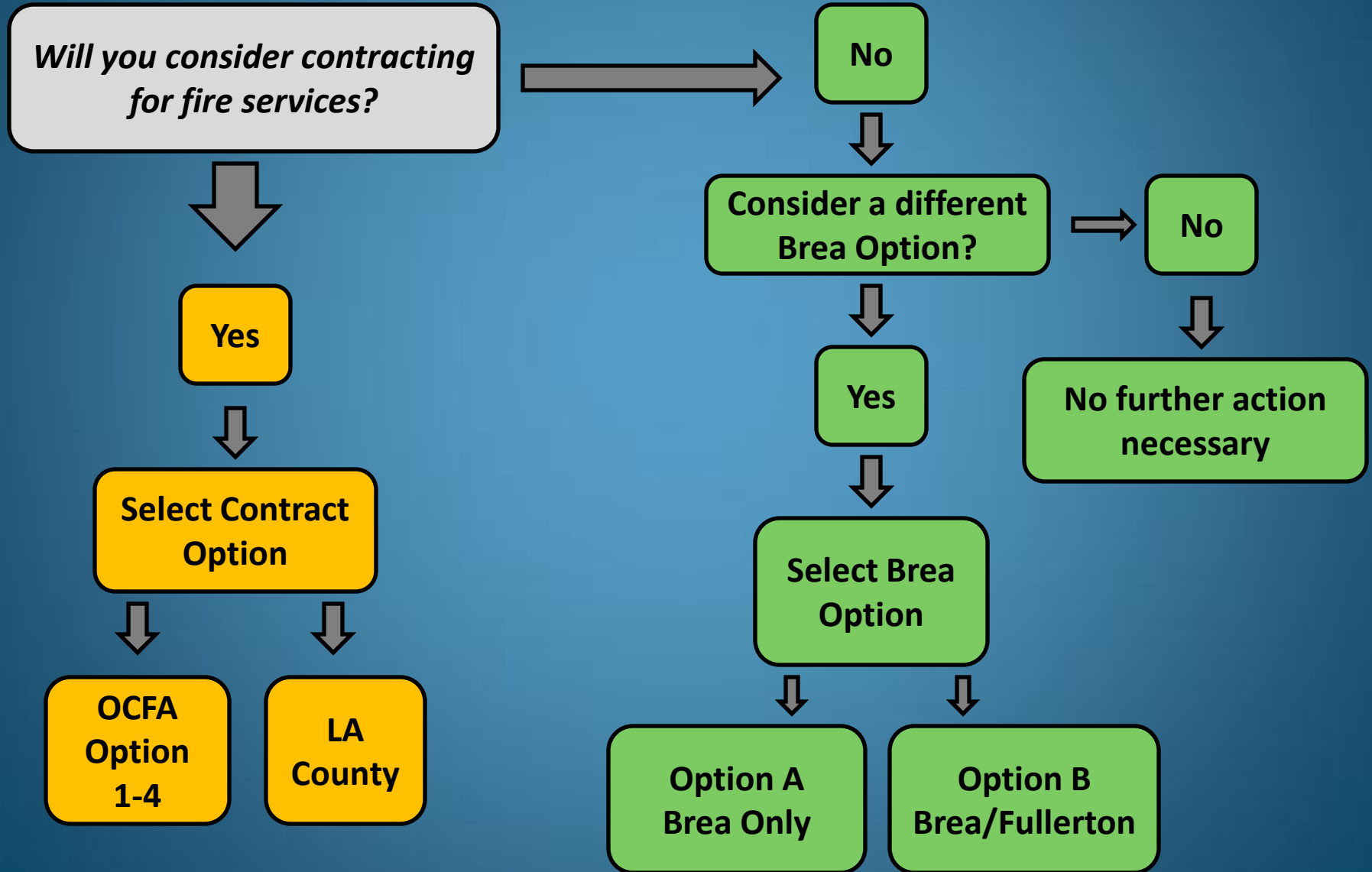
Policy Questions

1. Do options represent appropriate fire and paramedic response levels for community safety?
2. What is the appropriate/desired level of control (governance) over cost and service delivery in future years?

Policy Questions

3. What is the likelihood of each of the options performing cost effectively over the long-term?
4. Do each of the options meet our expectations for fair and reasonable impacts on affected employees?

City Council Policy Decisions



Questions?